

VISUALSPACE

WUHD-MR300

Wireless Presentation System



www.geratech.eu www.visualspace.biz

4K
ULTRAHD



TABLE OF CONTENTS

DISCLAIMERS	02
IMPORTANT SAFETY INSTRUCTION	03
INTRODUCTION	04
FEATURES	04
PACKAGE CONTENTS	05
PANEL	06
SYSTEM CONNECTION DIAGRAM DESCRIPTION	07
WUHD-MRTX INTRODUCTION	08
BASIC OPERATION	09-15
TROUBLESHOOTING	16
SPECIFICATION	17-18

DISCLAIMERS

Warranty

Products are backed by a limited 2-year parts and labor warranty. For the following cases Geratech Technology Limited shall charge for the service(s) claimed for the product if the product is still remediable.



The original serial number (specified by Geratech Technology Limited) labeled on the product has been removed, erased, replaced, defaced or is illegible.



The defects are caused by the fact that the product is repaired, dismantled or altered by anyone that is not from a Geratech Technology Limited authorized service partner. The defects are caused by the fact that the product is used or handled improperly or against instructions on User Manual.



The service, configuration and gifts are promised only by salesmen, but not covered by official contract.

IMPORTANT SAFETY INSTRUCTIONS



Do not expose this apparatus to rain, moisture, dripping or splashing. No objects filled with liquids, such as vases, shall be placed on the apparatus.



Do not install or place this unit in a bookcase, built-in cabinet or in another confined space. Ensure the unit is well ventilated.



Clean this apparatus only with dry cloth.



Do not install near any heat sources such as radiators, heat registers, stoves, or other apparatus (including amplifiers) that produce heat.



Unplug this apparatus during lightning storms or when unused for long periods of time.



To prevent risk of electric shock or fire hazard due to overheating, do not obstruct the unit's ventilation openings with newspapers, tablecloths, curtains, and similar items.



Only use attachments/accessories specified by the manufacturer.



Refer all servicing to qualified service personnel.

INTRODUCTION

The WUHD-MR300 is a wireless presentation kit with 1 Base unit 2 WUHD-MRTX It allows up to 16 WUHD-MRTX connect to Base-Unit simultaneously and, with maximum 9 users sharing at a time. User can share content from their laptops or mobile devices on a large meeting room screen in a very simple way without cables and additional configuration, just by clicking the button and airplay for iPhone. It makes meeting more efficient and productive.

FEATURES

PC/MAC Compatible

- The WUHD-MRTX is for both Windows PC and Apple Mac, which communicating with Base-Unit.

Android APP

- Provided to share content on Android mobile devices.

Airplay

- Screen mirroring supports iOS devices without using an app.

2.4G/5G

- Supports 2.4G or 5G wireless transmission.

Long Wireless Transmission Distance

- The wireless transmission distance without obstacle up to 30m (98ft) between WUHD-MRTX and Base-Unit.

Wireless AP

- Built-in Wi-Fi access point to set up a standalone Wi-Fi network between PC-sources/mobile devices and the Base-Unit.

LAN-Network

- Additional LAN port on Base-Unit, to link mobile devices to a LAN network or internet whilst being connected to the Base-Unit over Wi-Fi.

4K60Hz

- Video output resolution up to 4K 60Hz (YUV 4:2:0)

Audio Output

- Audio can be extracted from 3.5mm audio interface.

HDMI and VGA Outputs

- Supports HDMI and VGA output simultaneously.

Quantity of Simultaneous Connecting Devices

- Allows up to 16 WUHD-MRTX connect to Base-Unit simultaneously.

PACKAGE CONTENTS

Before start the installation of the product, please check the package contents:



1 x WUHD-MR300



2 x WUHD-MRTX



Optional accessories
(not standard)



1 x DC12V 1A Power Adapter



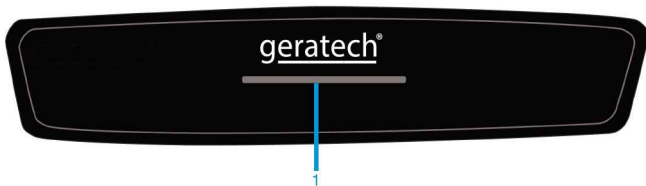
1 x Four kinds of plugs are optional



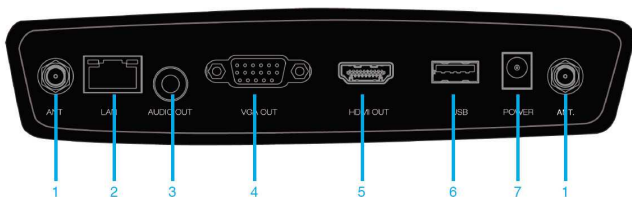
1 x Memory Stick

PANEL

Front Panel



No.	Name	Description
1	Indicator light	Red: casting screen Blue: wait for the screen shots



No.	Name	Description
1	WiFi ANTENNAS	Two detachable antennas for better WiFi performance
2	LAN PORT	Connects to the Internet
3	AUDIO OUT	Connects to speaker
4	VGA OUT	Connects to a VGA display
5	HDMI OUT	Connects to a HDMI display
6	USB	USB Button (WUHD-MRTX) Pairing
7	POWER	12V DC power input

SYSTEM CONNECTION DIAGRAM DESCRIPTION



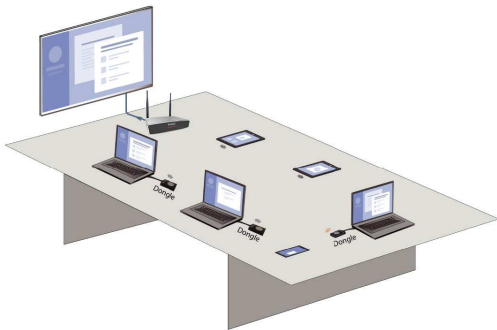
Before wiring, disconnect the power supplies of all the devices.

To the MR-Pad device :

1. Install the antenna on the antenna interface of the main engine.
2. The LAN port is connected to the internet.
3. AUDIO OUT is connected to the speaker.
4. HDMI OUT is connected to the HDMI input port of the display device.
5. The VGA OUT is connected to the VGA input port of the display device.
6. USB port for pairing MR-Pad.
7. Connect the power adapter to the DC power port.



Note: When all set, check the LED indicators. For LED indication, please refer to page 06/08.



Installation Instruction Chart

WUHD-MRTX INTRODUCTION



No.	Name	Description
1	Buttom	User operation function buttons
2	Indicator light	Run status display
3	USB	Connect to computer or host USB jack

WUHD-MRTX

PAIRED WITH THE HOST DEVICE:

Using the device before for the first time ,The WUHD-MRTX should be paired with host devices. The operation is as follows :

1. Insert the WUHD-MRTX into the host's USB jack ,and the WUHD-MRTX indicator light turns blue.
2. After waiting for 10 senconds ,the indicator light starts flashing. When it turns red ,the pairing is done.
3. Pull out the WUHD-MRTX device and the pairing is completed. (The whole pairing takes about 15 senconds.)

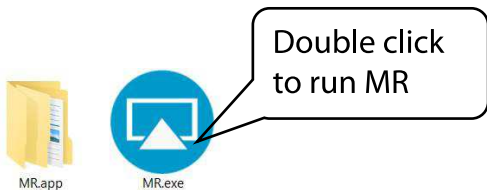
BASIC OPERATION

WINDOWS USERS:

STEP 1: Connect the WUHD-MRTX to the computer's USB port and the computer will display the USB disk name:MR

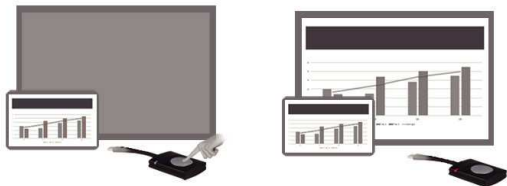


STEP 2: When you first use it, manually open the MR.exe program in the usb flash disk, and WUHD-MRTX begins to connect with the host (The program will run automatically after the second use).



BASIC OPERATION

STEP 3: Wait for the LED light on the WUHD-MRTX to turn into a constant blue light. Click the button on the WUHD-MRTX to project the screen. (At this point, the LED light on the WUHD-MRTX will turn red, indicating that the screen is being cast.)



Note: The WUHD-MRTX has been paired with the host machine before delivery. If the screen casting is not successful, please manually match.

Pairing method: connect the WUHD-MRTX to the host's USB port and wait for about 10 seconds. If the indicator light on the WUHD-MRTX is always on, the pairing will be successful.

BASIC OPERATION

MAC OS USERS:

STEP 1: Insert WUHD-MRTX into your MAC OS computer

STEP 2: For the first time, you need to run MR applications on MAC OS.

STEP 3: When you first use WUHD-MRTX, you need to manually open the "U disk" and click to run the MR.app application software. The system prompts the user of the current system to use the password.

STEP 4: When you use WUHD-MRTX again, you do not need to run the MR APP software again. There is no need to enter the user system password again.



USE AFTER EQUIPMENT IS READY:

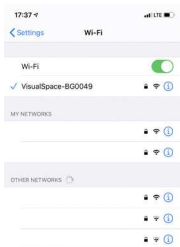
When the LED light on the WUHD-MRTX turns blue and the computer screen appears "button connected to the host computer successfully, can be shared", press the button on the WUHD-MRTX to put the contents of the computer onto the display; after sharing, the WUHD-MRTX indicator turns red; press the WUHD-MRTX button again to exit the sharing interface.



BASIC OPERATION

IPAD / IPHONE USERS:

STEP 1: Select VisualSpace-XXXXX device in wireless LAN to establish network connection.(Initial password is 12345678)



STEP 2: Use screen mirroring



STEP 3: Select VisualSpace-XXXXX device and click to project the screen



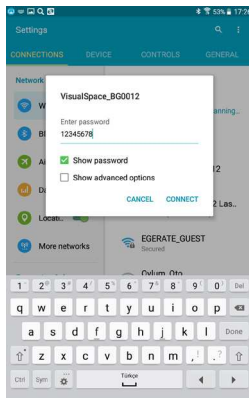
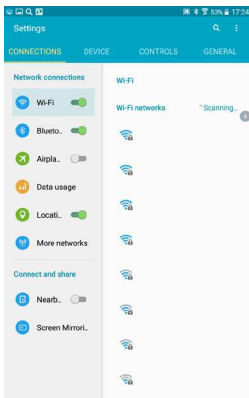
BASIC OPERATION

ANDROID USERS:

STEP 1: Scan the qr code, download and install the MR Configuration

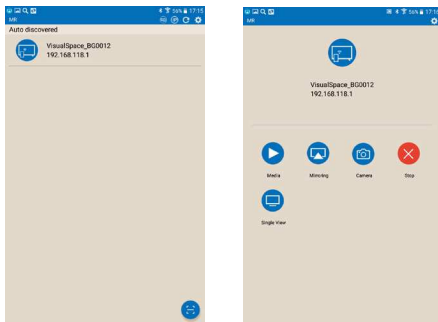


STEP 2: Select VisualSpace_XXXXX device in wireless LAN to establish network connection.(Initial password is 12345678)



BASIC OPERATION

STEP 3: Open the MR.APP and click the VisualSpace_XXXXX device to cast the screen . (The mirror screen has no sound, and the local audio and video screen has sound)



WEB SET:

STEP 1: Use the computer or mobile terminal to connect to the WiFi of the host. Enter the WiFi IP in the browser (Google is recommended) and enter the login interface.

STEP 2: User name: admin ; Password: admin



Note:

1. Web page login IP address: <https://192.168.118.1>
2. The PC terminal WiFi must be connected to the same WiFi on the host.

MR Configuration

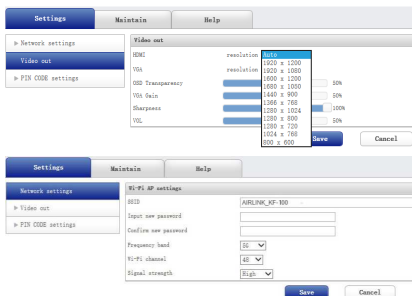
User name

Password

Remember me

BASIC OPERATION

STEP 3: The output resolution of the host, WiFi name and password, 2.4g /5G frequency band, signal channel, network setting, etc. Can be modified



Note:

The main machine has the function of wire bridge and wireless bridge

When the host's wired network port or wireless network card is connected to the Internet, the phone or tablet can be connected to the host hot spot, and the screen can be projected and the Internet can be accessed.

Q1. The Computer screens can't be shared.

- Press WUHD-MRTX button and share the screen when the red light is on.
- Press WUHD-MRTX button, blue light on the screen exit;

Q2. The screen cannot be displayed.

- The equipment needs to be newly matched. When the following situations shall be re-matched: Software upgrade; Make the Settings change to the Web; Dial keys need to be used with other machines.

Q3. Unable to connect

- The computer inserted the button, the blue light flickered for a long time, and the screen was always connected to the dialog box, just plug the button into the host USB port to be re-matched.

Q4. Screen can not be projected.

- when the computer enters the lock screen state, the screen cannot be cast, and the button displays blue light.

Q5. Connection and screen instability problem.

- Check the surrounding WiFi environment by installing the WiFi analyzer on android phones to see whether there are more WiFi disturbances (try not to more than 3 sources on one channel) and whether the WiFi signal strength of the host is sufficient (at least to be stable greater than -70dbm).If there is more interference, Then login host WEB to modify channels (5G frequency band has 9 channels to choose from, it is recommended to use 5G instead of 2.4g) to a relatively idle channel.If the signal strength is weak, then look at where the host is placed and move the host until the signal strength is stable greater than -70dbm.

SPECIFICATION

Technical	
Base-Unit Inputs	2 x wireless antenna (IEEE 802.11n/ac)
Base-Unit Outputs	1 x HDMI (Type A 19-pin female) 1 x stereo audio (3.5mm mini jack) 1 x VGA
Base-Unit Additional Ports	1 x Ethernet (RJ45) 1x USB (Type-A connector)
USB-Pad Port	1 x USB (Type-A connector)
Wireless Transmission Protocol	IEEE 802.11n/ac
Frequency Band	2.4GHz or 5GHz
Encryption	AES WPA PSK, WPA2 PSK
Wireless Data Rate	Up to 867Mbps
Transmission Distance	Up to 30m (98ft) without obstacle between USB-Pad and Base-Unit
VGA Output Resolution	800x600 1024x768 1280x720 1280x800 1280x1024 1366x768 1440x900 1600x1200 1680x1050 1920x1080 1920x1200
Simultaneous Connections	Up to 16(WUHD-MRTX)
Content Windows on Main Screen	9
Latency Time for 1080P Signal Transmission	<100ms
OS Supported	Windows: Windows 7/8.1/10 MAC OS: X 10.10/10.11/10.12 IOS: iOS9/iOS10 Android: Android 5.0 and above
Aspect Ratio	Equivalent ratio; 4:3; 16:9; 16:10

SPECIFICATION

General	
Operating Temperature	5°C to 40°C (32°F to 104°F)
Storage Temperature	-20°C to 60°C (-4°F to 140°F)
Humidity	0 to 90%, non-condensing
ESD Protection	±8KV (air-gap discharge)/ ±4KV (contact discharge)
Surge Protection	Voltage: ±1KV
Power Supply	DC12 V 1A
Power Consumption (Maximum)	Base-Unit: 5W USB-Pad: 1.5W
Device Dimension (L x W x H)	Base-Unit: 180mm x 118mm x 40mm 7.09" x 4.65" x 1.57" USB-Pad body: 70mm x 55mm x 17mm 2.76"x2.17"x 0.67" , USB-Pad cable 105mm
Net Weight	Base-Unit: 640g (1.41lbs) with antennas USB-Pad: 60g (0.13lbs)

VISUALSPACE

WUHD-MR300

www.geratech.eu www.visualspace.biz

geratech®

